



FOX



GENERAL SPECIFICATIONS

CHASSIS:

Two half frames with central articulated joint for steering and ground gearing oscillation. Heavy duty type.
- Front chassis with driving place, diesel engine and hydraulic system.
- Rear chassis.

ENGINE:

Deutz TD2011 L04i, Diesel, 4 cylinders, turbo, forced air-oil cooling

ENGINE POWER:

54.1 Kw (73CV) to 2500 r.p.m.

TRANSMISSION:

Hydrostatic type with automatic regulation.
Axial pistons pump of variable displacement jointed to diesel engine.
Hydraulic motor at axial pistons of variable displacement, mounted on front axle.

GEARBOX:

Mounted on axle.

AXLES:

Both front and rear axles are rigid. All wheel drive.

STEERING:

Hydraulic steering. Fluid drive acting on the central articulated joint through lubricated dynamic cylinder.

CABIN:

Gyratory driving seat for working or transferring position.

All data are subset to modifications without prior notice

MADRID: Ctra de Valencia, Km 19,200. 28529 RIVAS VACIAMADRID (MADRID). FAX:916701005. e-mail:madrid@mlorenzana.com

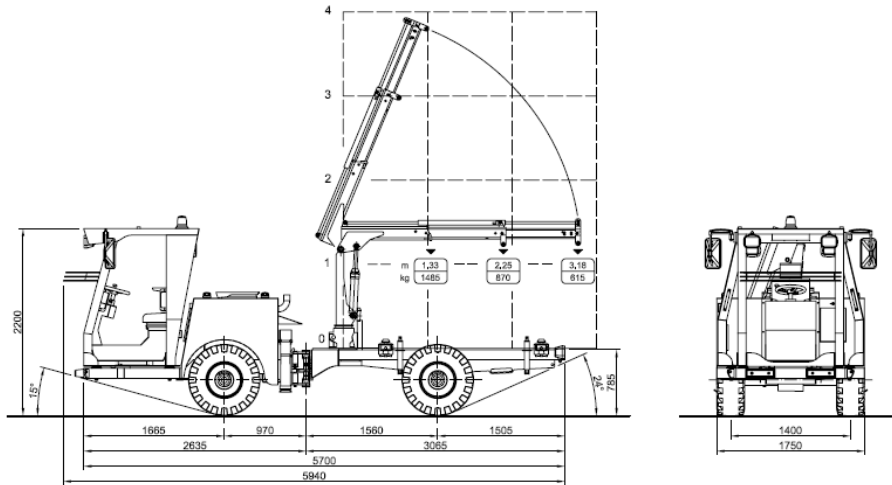
LEÓN: Pol. Ind. Villacedré. 24194 VILLACEDRÉ (LEÓN). FAX:987849036. e-mail:leon@mlorenzana.com

VALENCIA: Pol. Ind. El Oliveral C/C, 12. 46190 RIBARROJA DEL TURIA (VALENCIA). FAX:961643073. e-mail:valencia@mlorenzana.com

www.mlorenzana.com TEL. 902 151 236



FOX



BRAKES:

- Service: Hydraulic internal disc type in oil bath acting on front axle.
 - Parking: Negative hydraulic and internal disc type in oil bath acting on front axle.
- Reserved brake when engine is stopped.

HYDRAULIC CIRCUITS:

- Two different circuits with only one tank:
- TRANSMISSION: Hydrostatic circuit, forced air cooling.
 - SERVICES: Gear pump for platform work, steering and brakes.

ELECTRICAL EQUIPMENT:

24 V battery with front and rear working lights.

STEERING RADIUS:

Internal: 4800 mm
External: 6800 mm

SPEED:

Movement: 0 to 20 km/h

MAX. SLOPE:

25%

CAPACITIES:

- Oil tank for hydraulic equipment.....135l
- Fuel tank.....110l

TYRES:

12 – 16.5. Rim 9.75 – 16.5

WEIGHT:

5.500 kg

All data are subset to modifications without prior notice

MADRID: Ctra de Valencia, Km 19,200. 28529 RIVAS VACIAMADRID (MADRID). FAX:916701005. e-mail:madrid@mlorenzana.com
 LEÓN: Pol. Ind. Villacedré. 24194 VILLACEDRÉ (LEÓN). FAX:987849036. e-mail:leon@mlorenzana.com
 VALENCIA: Pol. Ind. El Oliveral C/C, 12. 46190 RIBARROJA DEL TURIA (VALENCIA). FAX:961643073. e-mail:valencia@mlorenzana.com

www.mlorenzana.com TEL. 902 151 236